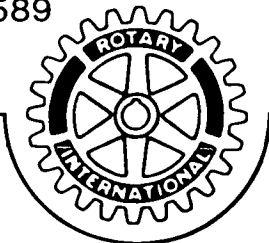


# SPACE CENTER ROTARY CLUB BLASTOFF

The Space Center Rotary Club  
meets on Mondays, 11:45 a.m.  
at the Nassau Bay Hilton

Rotary International District 589



**"Put life into Rotary - your life"**

June 26, 1989

## SPACE CENTER ROTARY EVENTS

**Mon., June 26** at the Hilton

6:30 p.m.: Cocktails

7:00 p.m.: Dinner and **Installation** of President John Watson, our 1989-90 Board and Officers featuring District Governor Sonny Nichols, a String Ensemble, fun and fellowship.

**Mon., July 3:** No meeting.

**Thurs., July 6** at the Hilton

7:00 a.m.: Board of Directors

8:00 a.m.: Red Badge meeting

**Sat., July** at Crosby, TX

1:00-5:00 p.m. Banana Beach Bash and Potluck with all District 589 **Rotary Exchange Students**. RSVP to Karen Birchenough at 480-9796.

**Mon., July 10** at the Hilton

11:45 a.m.: Club Meeting, program TBA

**Sat., July 15**

District Fundraiser Meeting, RSVP to John Watson 283-6000.

**Mon., July 17** at the Hilton

7:00 a.m.: Board of Directors

8:00 a.m.: Red Badge meeting

8:00 a.m.: Deadline for submission of articles and announcements for the Blastoff issue covering July 31-August 11.

**Mon., July 24** at the Hilton

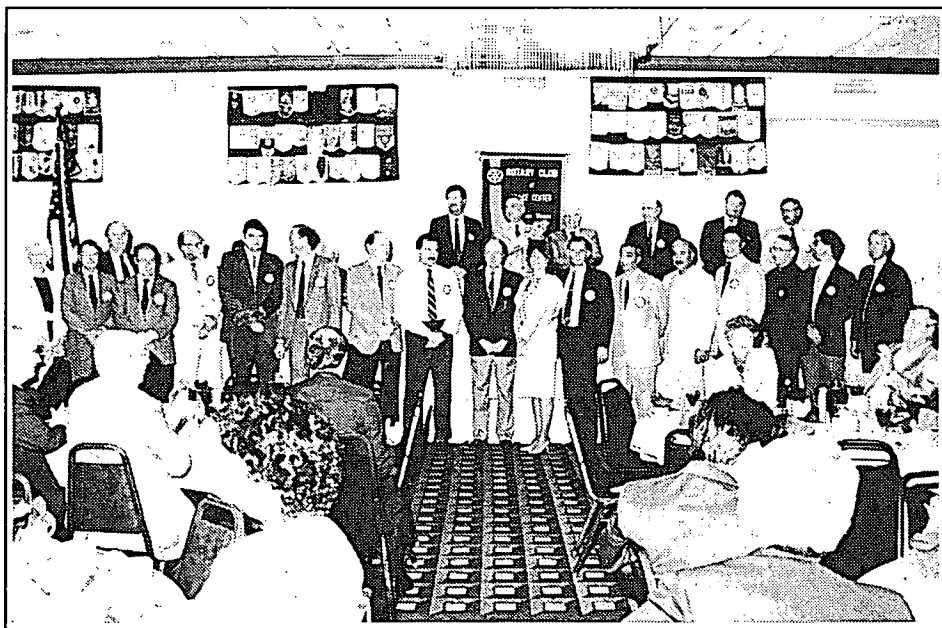
11:45 a.m.: Club Meeting, program TBA

**Sat., July 29** at UH-CL (Satellite Bldg.

7:15 p.m.: Wine & Cheese party

8:00 p.m.: **4th Annual Shaw Festival performance of "Misalliance."** Plan to buy tickets for yourself, your spouse and your friends at \$12.50 person and support **Space Center Women of Rotary** as they raise money for Rotary projects such as PolioPlus. This is a delightful, entertaining evening. Call Dorothy Frost (474-4690) or Shirley Dillon (480-4428) for tickets.

**November 10-12** in New Braunfels Annual couples trip to the Wurstfest, accommodations at Camp Warnecke. Call Bill Lowes at 486-4550 ASAP to make reservations for you and your spouse.



District Governor Sonny Nichols recognizes the many Space Center Rotarians who worked so hard to make the District Assembly a success.

**OUR \$50  
CONTRIBUTORS  
FOR THE MONTH**

*Good people to do business with*

**JACK ROWE**

**FUNERAL HOME**

**332-1571**

1600 E. MAIN LEAGUE CITY

**TARIN AND COON**

**Real Estate Appraisers**

**911 Gemini**

**480-2777**



**Bay Area  
Office Supply  
& Printing**

*All Your Printing &  
Office Needs in One Place!*

JOE SKELLY • 488-7421



**CONSTRUCTION • REPAIR • MAINTENANCE**

24 hour emergency service

Rotarian Bill Weseman, President **488-2244**



- Fax machines
- Camcorders
- Televisions
- Hi-Fi Equipment
- VCRs
- Copiers
- Nintendo

2425 Bay Area Blvd. **486-3939**

Space will be available  
for your listing.

Thank these Rotarians  
for this support.

**SAVINGS OF AMERICA**

A Division of Home Savings of America, F.A.

991 Nasa Road 1 • Houston, Texas 77058  
(713) 488-4673



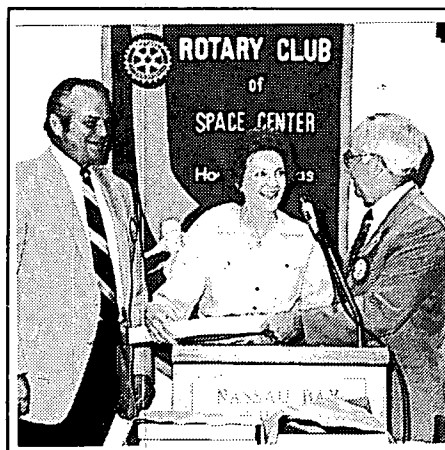
**David V. Baldwin**  
Assistant Vice President  
Manager



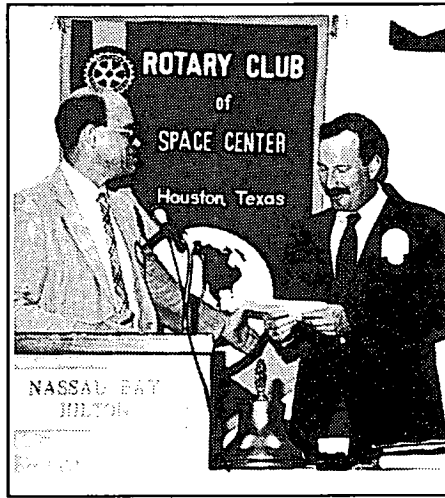
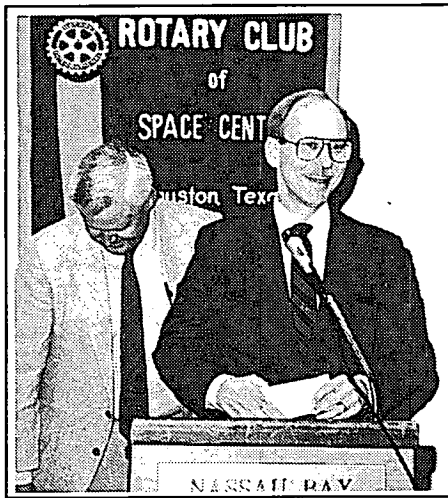
Recently retired NASA Procurement Officer Jim Neal charted the development of NASA from Humble Oil's "Diamond Jim Ranch" to the present facility, \$860 million budget, 3500 government employees and 10,500 sub-contractor employees.



Rotarians Huey Barnett and Carson Stephens (the old guys in the back row) pose with the proud winners of the Drug Awareness Essay Contest recently conducted at Clear Lake Intermediate School by our Youth Committee.



Official Songbird Ray Graham looks on with approval as Billy Weseman presents a well-deserved "Presidential Award" to Ann Fulcher for her faithfulness and excellence in providing beautiful piano music for our meetings.



ROTARY FUNDS GO TO GOOD CAUSES: (Left) Sheltering Arms Executive Director Robert Phillips expresses joyful thanks to our club after receiving a check from Senior Citizen Chairman Steve Waldner. (Right) Young Life Area Director John Wise receives a donation check from Steve Bolton of our Youth Committee.



Mike Hesse and Eddie Tarin listen intently as Sam Douglas, Chairman of the Board of Equus Capital Corporation, enlightened us on the wild, wild world of corporate acquisitions.



Sheriff Johnny Klevenhagen told us about the serious problems of overcrowding in our county jails and state prisons - on average only 28 days of each sentenced year are actually served. Education and more prison space are both needed.

**OUR \$50  
CONTRIBUTORS  
FOR THE MONTH**  
*Good people to do business with*

*Bay Area Printing, Inc.*

Printing, Blue Printing,  
High Speed Copying  
**Lonnie Clement 488-4900**

Space will be available  
for your listing.  
Thank these Rotarians  
for this support.

**Φ K D** **PHI KAPPA DATA**  
RYDER COURT  
LEAGUE CITY, TX 77573  
(713) 334-3676  
*International Marketing  
and Printing*

**SHIRLEY BATTEY**

1210 Nasa Road One  
Houston, Texas 77058

Off. 713/333-3613  
Res. 713/333-2921



**Aerospace  
Engineering  
and  
Consulting**  
(713) 338-2682

**1<sup>ST</sup> NATIONAL  
BANK of Clear Lake**  
Member FDIC  
**JIM HARGROVE**  
President

Space will be available  
for your listing.  
Thank these Rotarians  
for this support.

**It has been a good year!** Yes, we can be proud of the accomplishments of all the members of Space Center Rotary under the leadership of President Billy Weseman, our Officers, Board and Committee Chairmen. Over \$62,700 was raised in charitable contributions of which \$40,000 went right back into our local community in support of scholarships and grants to worthy projects and organizations.

**We raised approximately:**

\$10,400 in the Reverse Draw  
 \$36,000 in the Shrimporee  
 \$ 3,000 in the Memorial Day Golf Tournament  
 \$ 3,800 in Blastoff Ads  
 \$ 9,500 in Contributions to Rotary Foundation

In all, the club and its members gave \$12,500 to Rotary Foundation - this earned a \$9000 match from the District to net \$21,500 in support of projects such as PolioPlus.

New levels of **Dues and Admission Fees** were voted in at our June 19th meeting: \$125.00 admission includes a Rotary shirt and cap, the blue book, etc. \$160.00 annual dues include a subscription to "The Rotarian" and \$40.00 dues to District 589 and Rotary International.

**!!!! Help Needed !!!!!**

At least three assistant editors, three photographers and two ad salesmen are needed to "share the load" and keep outstanding issues of the Space Center Rotary Blastoff coming out. Many hands make light work. Our thanks and congratulations to John Brown and Don Carrico for carrying this heavy load by themselves over the past year. If you are willing to help your club where help is urgently needed, please contact Steve Bolton (480-2605) or Dave Cordell (683-7711).

**"Presidential Awards"** from Billy Weseman were presented on June 12 and 19 to the following Rotarians in recognition of their outstanding service:

Huey Barnett	Floyd Boze
John Brown	Don Carico
Lonnie Clement	Dave Cordell
Bob Driver	George Fleming
David Gochnour	Ray Graham
Eddie Harris	Charles Hartman
Terry Hesson	Ray Hooker
Don Kyle	Al Ligrani
Jack Lister	Dave Owen
Bill Predmore	Rick Rosenhagen
Billy Ray Smith	Carson Stephens
Eddie Tarin	Carlos Villagomez
John Watson	Bill Webb
Tom Wier	Bob Wren
Jim Wyatt	Alan Wylie
Pete Zamora	and
Gary Stremel, Dr. Fustok	
and the staff of	
St. John Hospital	



Our 1989-90 President John Watson and his wife Carolyn were among 38,000 Rotarians, spouses and guests in attendance at the Rotary International Convention in Seoul, Korea.



**SPACE CENTER ROTARY**

P.O. Box 58862, Houston, TX 77258

Rotary International President: Royce Abbey  
 District 589 Governor: Roy Long  
 Space Center Rotary Officers & Directors:

**OFFICERS**

Billy Weseman, President  
 John Watson, President Elect  
 Billy Ray Smith, Secretary  
 Jack Lister, Treasurer  
 Terry Hesson, Sergeant-at-Arms  
 Jim McNatt, Past President  
 Floyd Boze, Past District Governor

**DIRECTORS**

Lonnie Clement  
 Eddie Harris  
 Dave King  
 Vic Maria  
 Owen Morris  
 Dr. David Taylor  
 David Owens  
 Tom Wier  
 Woody Williams

Eddie Tarin, Program Chairman  
 John Brown, Blastoff Editor

**FIRST CLASS**